

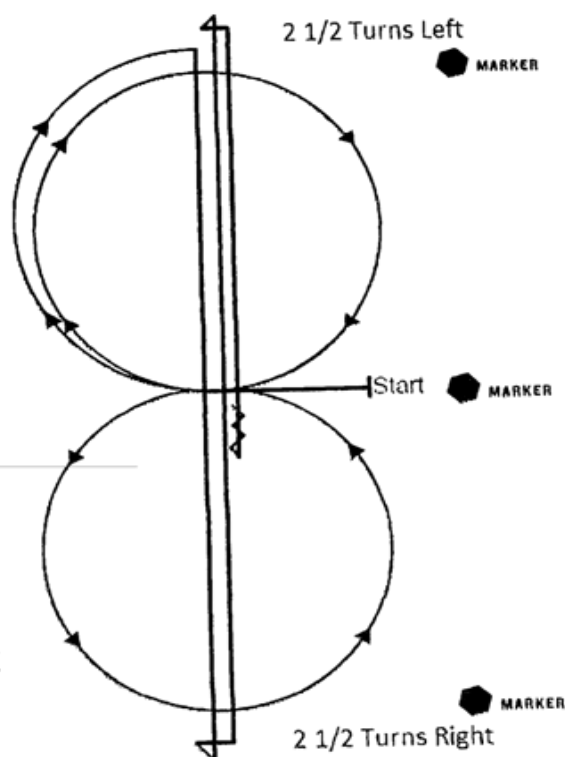
ALL Ranch Reining/All Working Cow Horse

& Pinto & Palomino

Boxing Class
Reining Pattern

WORKING COW HORSE PATTERN 6

Fall Color
ROUNDUP



- Trot to center of arena, stop. Start pattern facing towards judge.
1. Beginning on the right lead lope one circle to the right. Change leads at the center of arena.
 2. Complete one circle to the left. Change leads at the center of arena.
 3. Continue to top of arena and run down center of arena past the end marker and come to a sliding stop.
 4. Complete 2 1/2 spins to the right.
 5. Run to the other end of the arena, past the end marker and come to a sliding stop.
 6. Complete 2 1/2 spins to the left.
 7. Run past the center marker, stop, and back at least 10 feet. Hesitate to complete pattern.

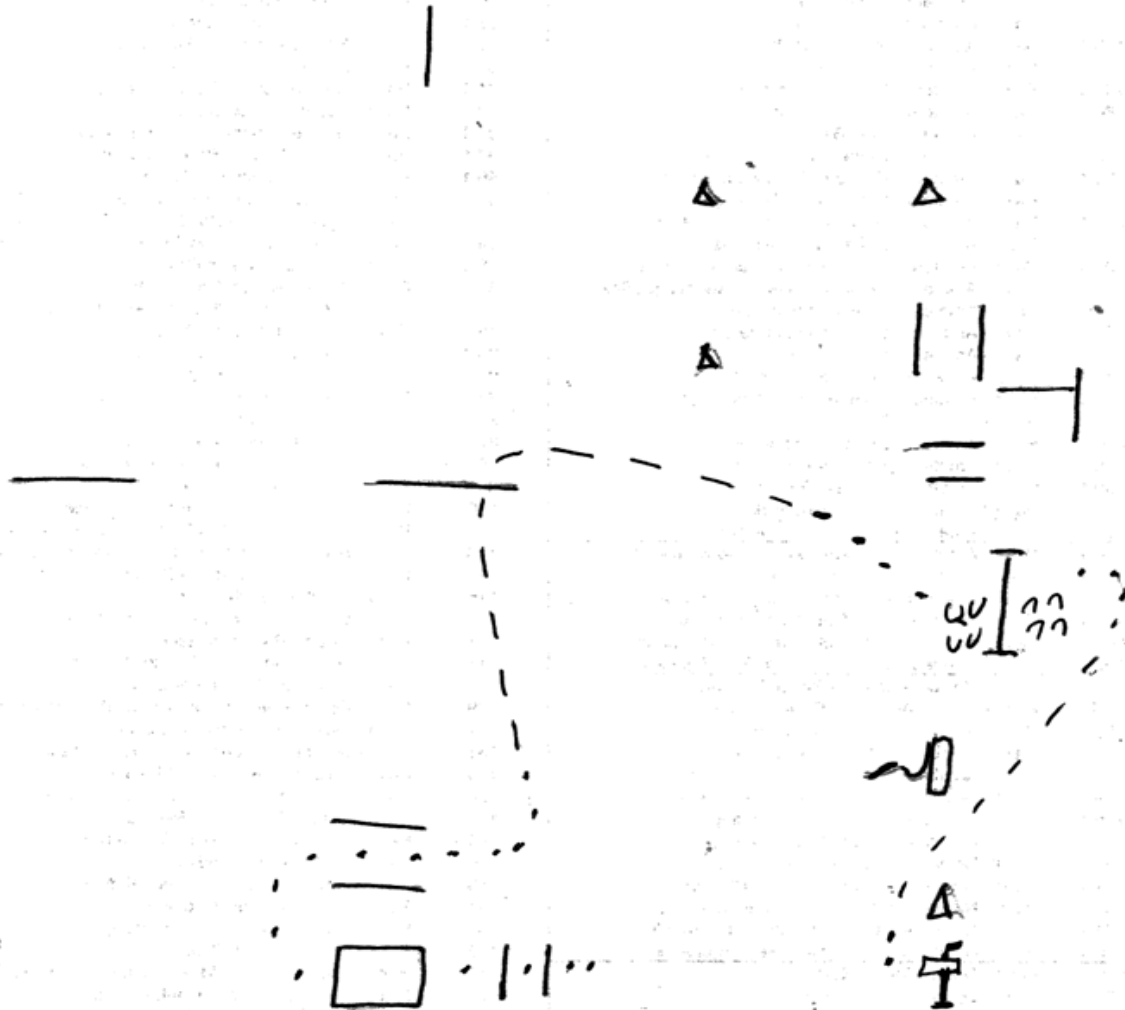
Pattern 6

1. Right circle
2. Left circle
3. Stop

4. 2 1/2 right spins
5. Stop
6. 2 1/2 left spins
7. Stop and back up

Ranch Trail - Leadline

Fall Color
ROUNDUP

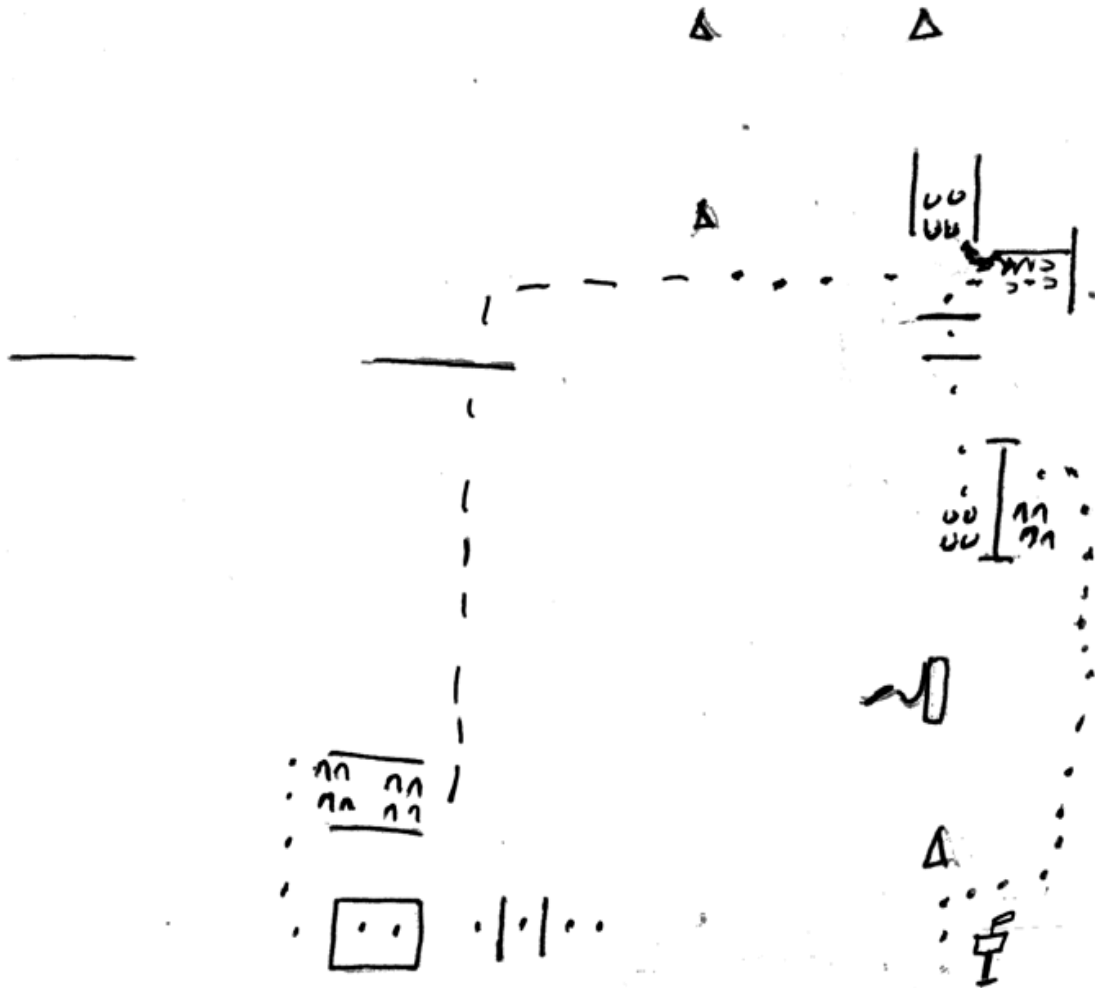


RANCH TRAIL - LEADLINE

1. Walk over logs & bridge & through chute.
2. Trot or walk over log and to gate.
3. Work gate.
4. Trot or walk to mailbox
5. Pick up mail and exit.

Pinto Yearling In Hand Ranch Fundamentals

Fall Color
ROUNDUP

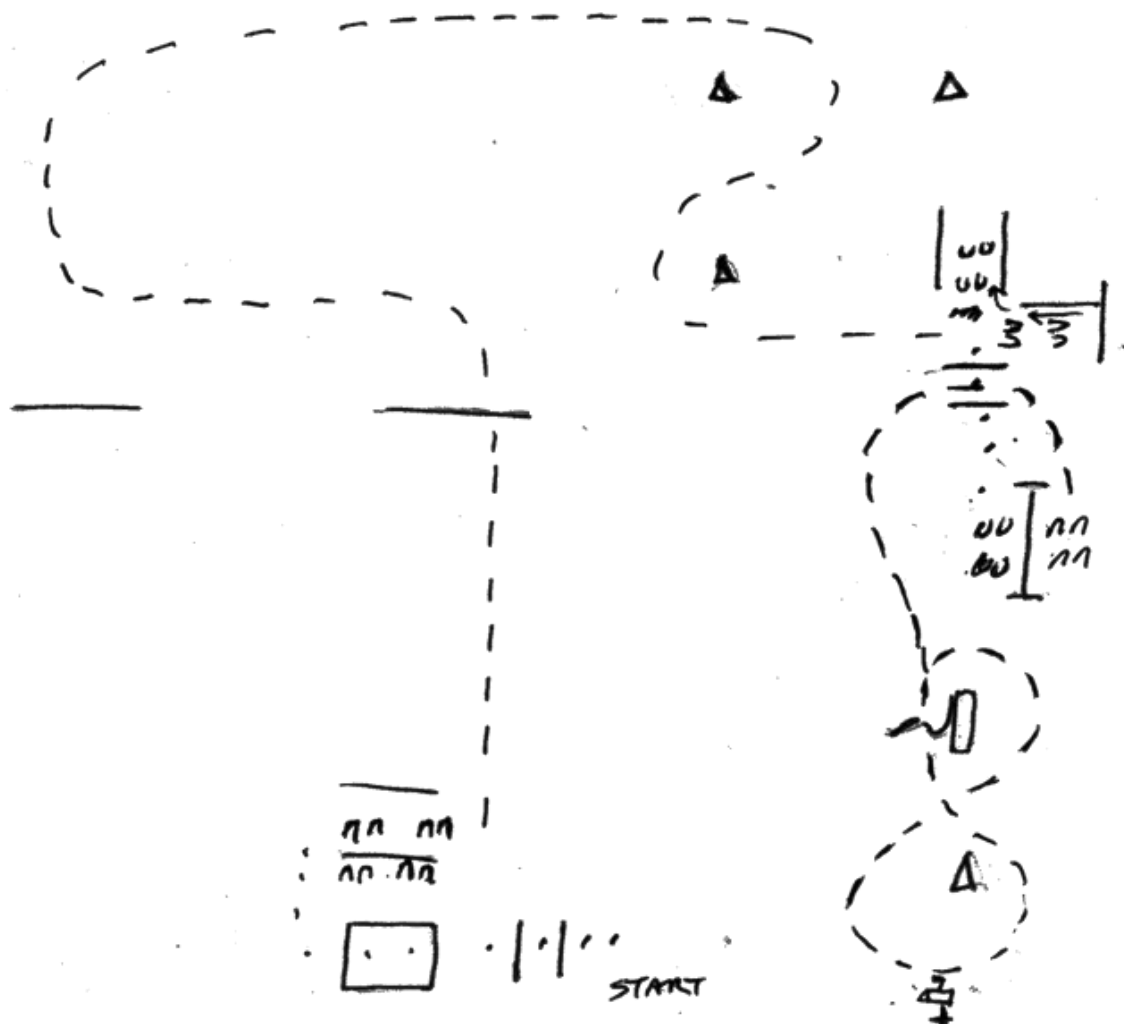


YEARLING IN HAND RANCH FUNDAMENTALS

1. Walk over logs & bridge to sidepass.
2. Sidepass right between logs.
3. Trot over log and into chute.
4. Back "L"
5. Walk over logs to gate. Work gate.
6. Walk to mailbox, pick up mail and exit.

Ranch Trail All Walk/Trot |

Fall Color
ROUNDUP

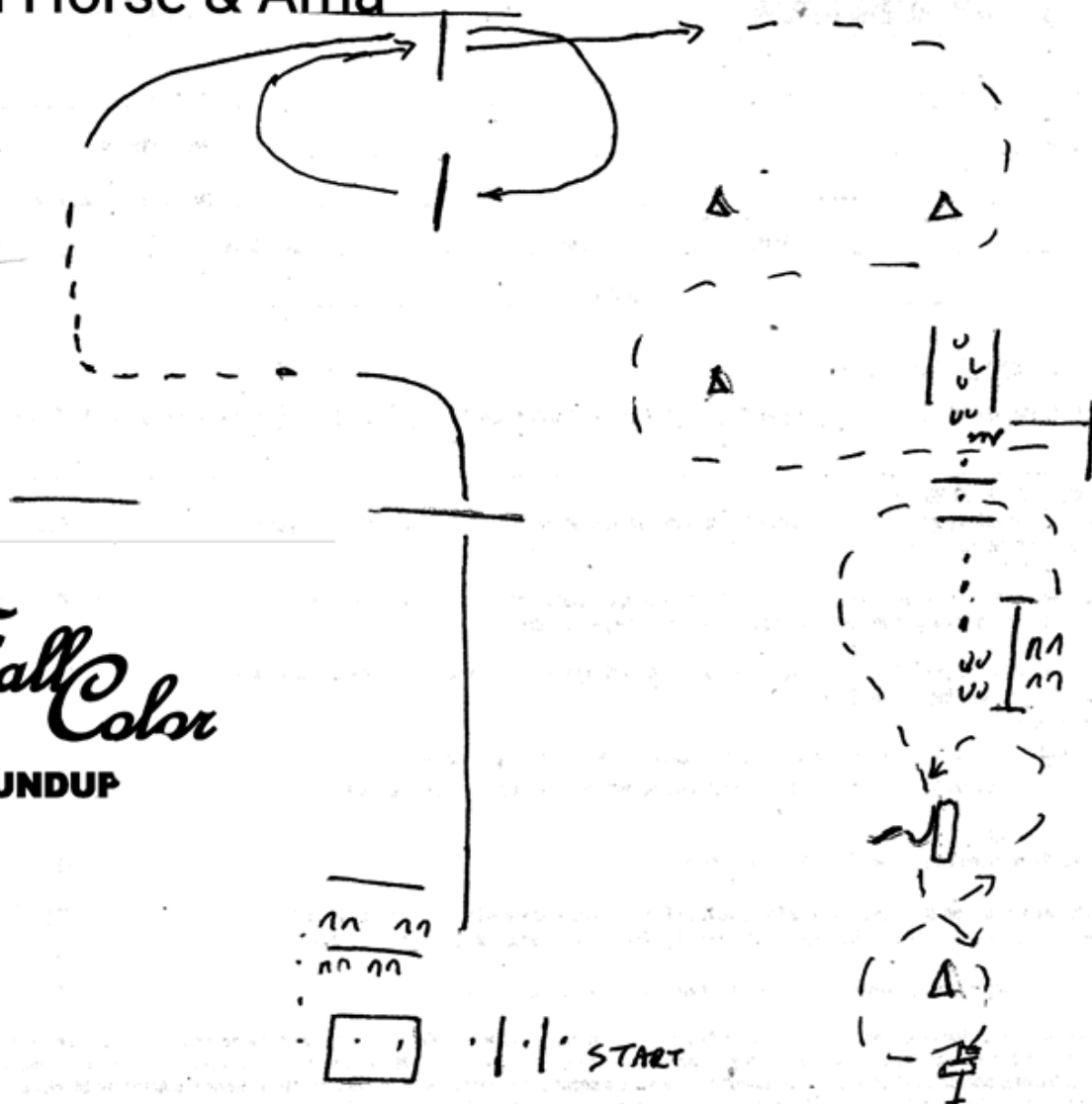


RANCH TRAIL WALK/TROT - ALL

1. Walk over logs & bridge to sidepass.
2. Sidepass right over log.
3. Trot over log, around markers and into chute.
4. Back "L"
5. Walk over logs to gate. Work gate.
6. Trot between logs to drag.
7. Open W/T and Green Horse W/T - Drag log in figure 8 at walk or trot (ALL Youth W/T, Amateur W/T and Rookie W/T will carry object at a walk or trot in figure 8 around marker and return to hook).
8. Walk to mailbox, pick up mail and exit.

Ranch Trail - Open, Grn Horse & Ama

Fall Color **ROUNDUP**



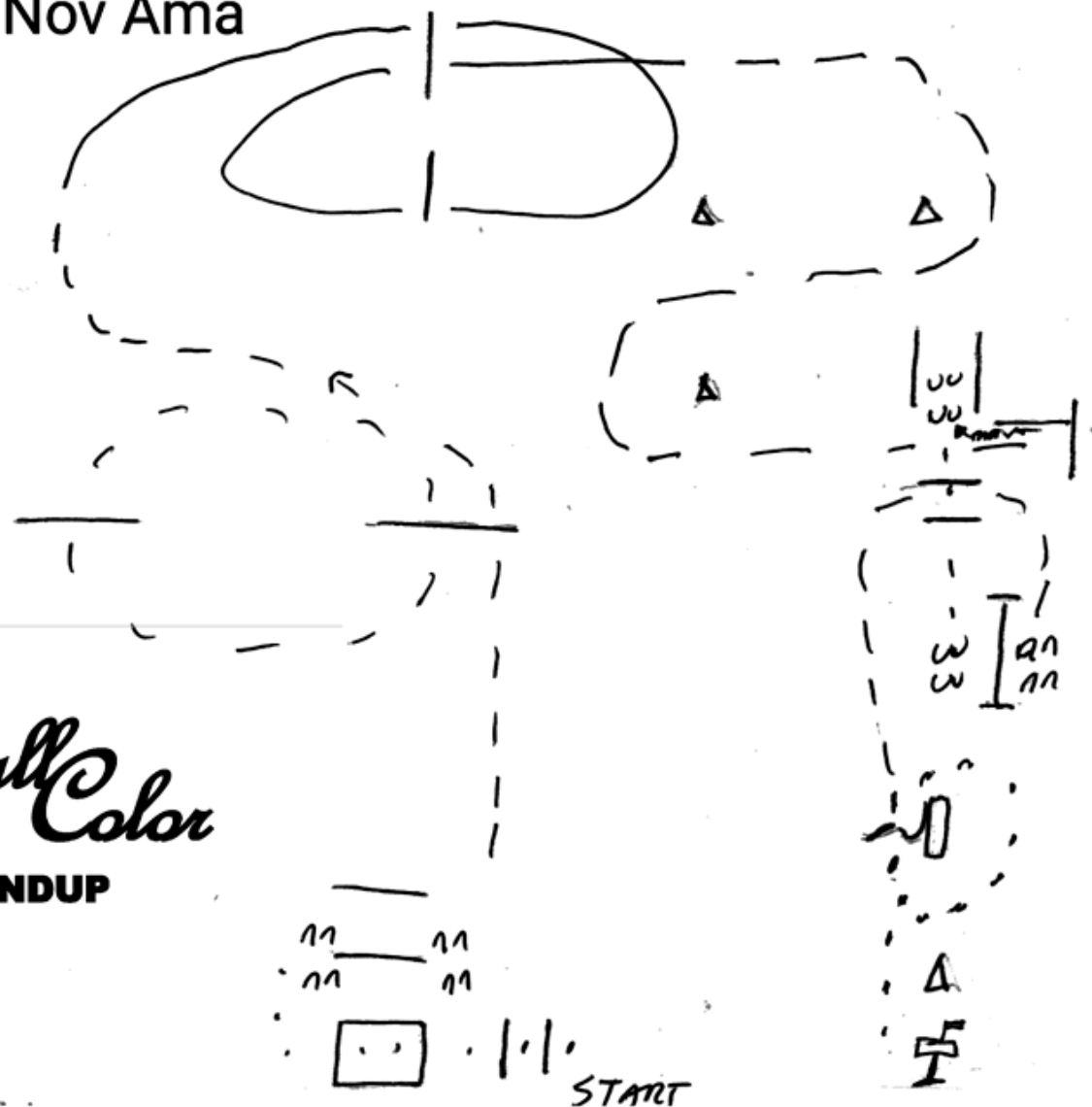
RANCH TRAIL OPEN, AMATEUR & GREEN HORSE

1. Walk over logs & bridge to sidepass.
2. Sidepass right over log.
3. Lope left lead over log, break to extended trot, lope right lead over logs.
4. Trot around markers and into chute.
5. Back "L"
6. Walk over logs to gate. Left hand gate.
7. Trot between logs to drag.
8. Drag log in figure 8 (walk or trot).
9. Walk to mailbox, pick up mail and exit.

Ranch Trail -Youth, Nov Yth, Rookie & Nov Ama

Fall Color

ROUNDUP

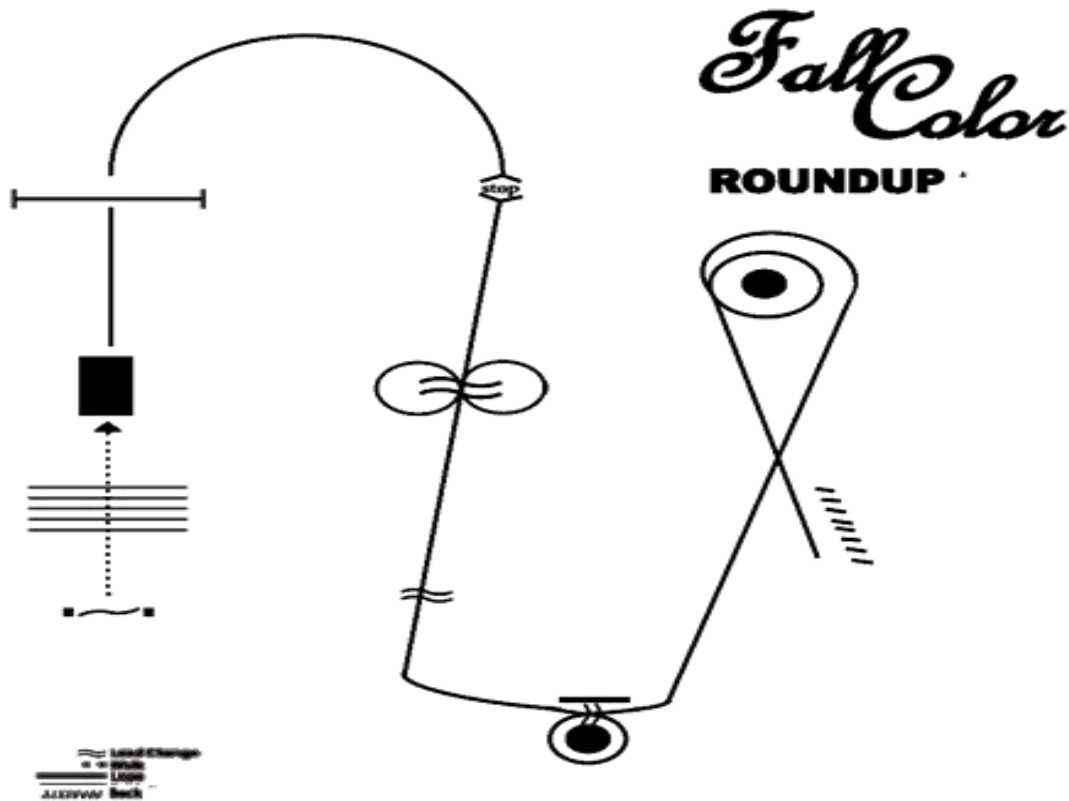


RANCH TRAIL -

YOUTH, NOVICE YOUTH, ROOKIE RIDER, NOVICE AMATEUR

1. Walk over logs & bridge to sidepass.
2. Sidepass right over log.
3. Trot over logs, pick up right lead lope over logs.
4. Extended trot around markers and into chute.
5. Back "L"
6. Walk over logs to gate. Left hand gate.
7. Trot between logs to drag. Carry rope around pole at a walk or trot and return to hook.
8. Walk to mailbox, pick up mail and exit.

RANCH HORSE PATTERN 1

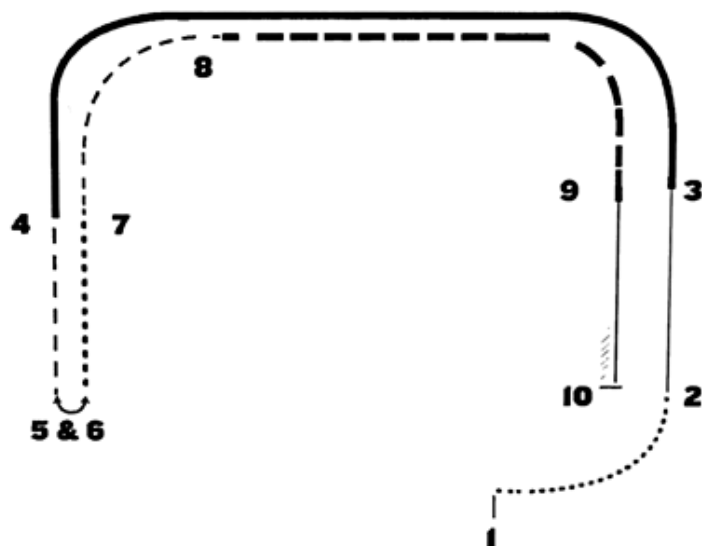


- 1) Work gate;
- 2) Walk over five logs. Distance between logs, measured at the edge of logs, twenty (20") to twenty-four (24") inches (40-60 cm);
- 3) Walk over bridge;
- 4) Begin on right lead at a slow lope to and over twelve (12") inch (30 cm) jump. (*Distance to be minimum of 36');
- 5) Stop and take down coiled rope in hand. Begin on left lead;
- 6) With speed on left lead make a fast figure eight, executing a simple or flying change to right lead. Execute another simple or flying lead change to left lead;
- 7) In between log and barrel execute a simple or flying lead change to right lead and around barrel showing speed. In between log and barrel execute a simple or flying lead change to left lead and lope with speed to next barrel;
- 8) Begin one fast large circle and one fast small circle around barrel on left lead. Run down straight away with speed;
- 9) Execute a sliding stop as coiled rope is pitched out and horse works rope by backing up. EXCEPTION: for all amateur and youth classes See Rule 3645;
- 10) Recoil rope. EXCEPTION: for all amateur and youth classes See Rule 3645;
- 11) Hesitate to demonstrate completion of pattern.

RANCH HORSE

3645. Tack. A neck rope is required in this event. EXCEPTION: All Amateur and All Youth classes the neck rope and a rope are not required. The use of a keeper is prohibited. Closed reins are recommended. Split reins may be tied together prior to beginning the class.

Ranch Pleasure—Pattern 2



Fall Color

ROUNDUP

For Walk/Trot Classes:
Trot where pattern calls for lope.
Extended Trot where pattern calls for
extended lope.

When establishing the course, the following distances are suggested. Patterns may begin in either direction and markers are optional.

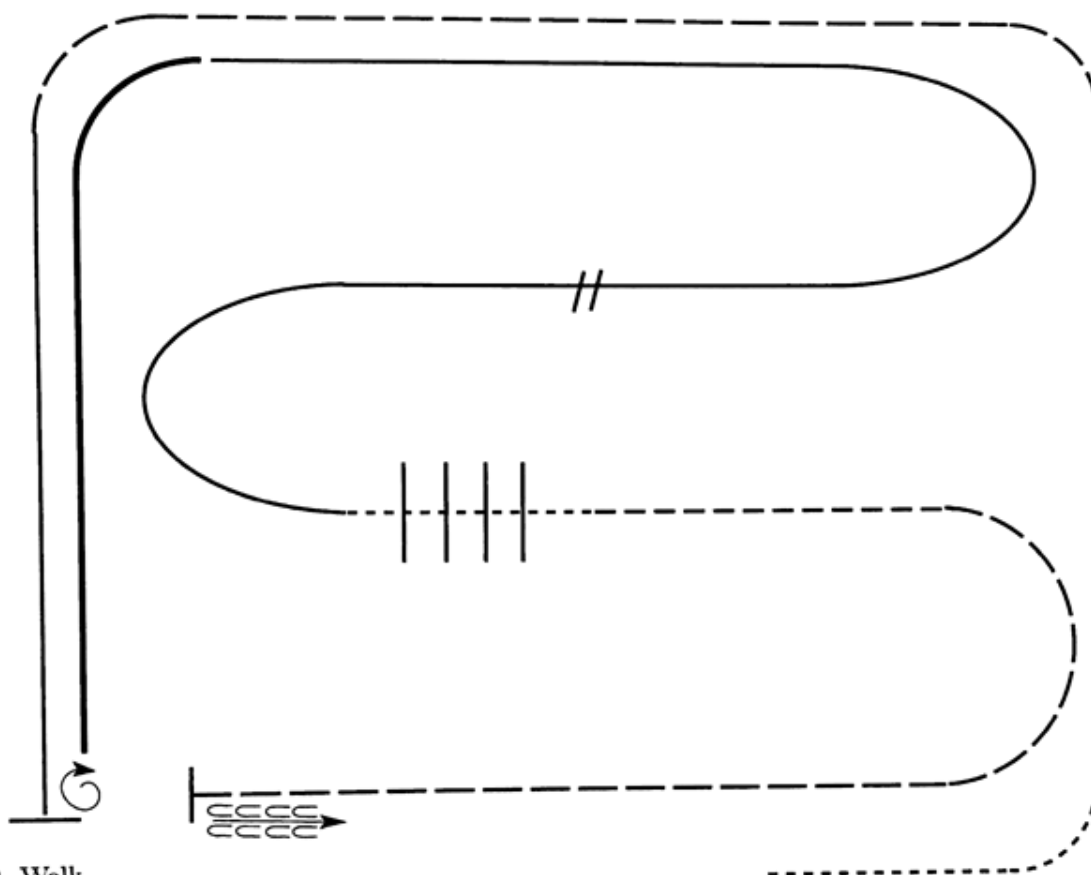
1. Walk from 1 to 2 - 30 feet
2. Lope from 2 to 3 - 150 feet
3. Extended Lope from 3 to 4 - 200 feet
4. Trot from 4 to 5 - 120 feet
5. Stop at 5; reverse (either direction)
6. Extended Walk from 6 to 7 - 75 feet
7. Trot from 7 to 8 - 90 feet
8. Extended Trot from 8 to 9 - 240 feet
9. Lope from 9 to 10 - 150 feet
10. Stop and Back at 10 - approximately one horse length

Walk
Extended Walk
Trot
Extended Trot
Lope
Extended Lope
Back \\\

Fall Color Roundup

All Ranch Riding

Show Date: 10-25-2025



1. Walk.
2. Trot
3. Extended trot.
4. Left lead lope
5. Stop, 1 1/2 turn right
6. Extended lope
7. Collect to working lope-right lead
8. Change leads (simple or flying)
9. Walk
10. Walk over logs
11. Trot
12. Extended trot
13. Stop and back

Walk	-----
Jog	- - - - -
Extended Jog	-----
Lope	=====
Lead Change	///
Back	←=====
Marker	(B)

[RR/2]

Pattern Provided by:

Judges